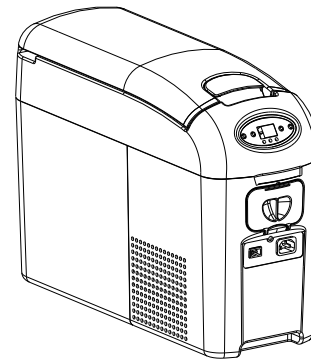
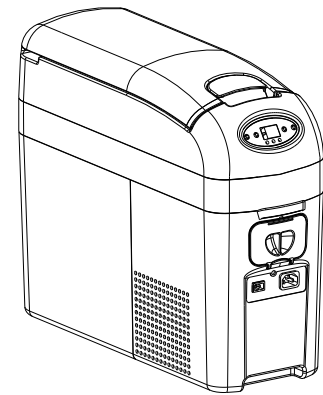


QUALITY FREEZER

Portable DC12V/24V Compressor Fridge Freezer



BD/C-09



BD/C-11

INSTRUCTION MANUAL

Please read this manual carefully before using this product

CONTENT

Structure Table.....	2
Instructions.....	2
Installation.....	3
Baldric installation.....	3
Temperature Settings.....	3
Emergency Switch.....	4
Parts List.....	5
Maintenance.....	5
Specification.....	5
Specification.....	6

**This appliance is not intended for use by persons (including children) With reduced physical, sensory or mental capabilities, or lack of experience and knowledge, unless they have been given supervision or instruction concerning use of the appliance by a person responsible for their safety.
Children should be supervised to ensure that they do not play with the appliance.**

Parts List

NO.	Contents	Unit	Quantily
1	Strap	Unit	1
2	DC cable	Unit	1
3	AC cable(optional)	Unit	1
4	Mounting base (with mounting screws)	Unit	1
5	AC/DC adapter	Unit	1

Maintenance

1. If the unit cuts out do not switch the unit on again. Leave for 5 minutes. This will allow the pressure in the unit to stabilize as not to damage the compressor.
2. To clean the unit.Do not clean the unit while it is running.Switch the unit off.Wait for it to defrost then clean with a damp cloth.

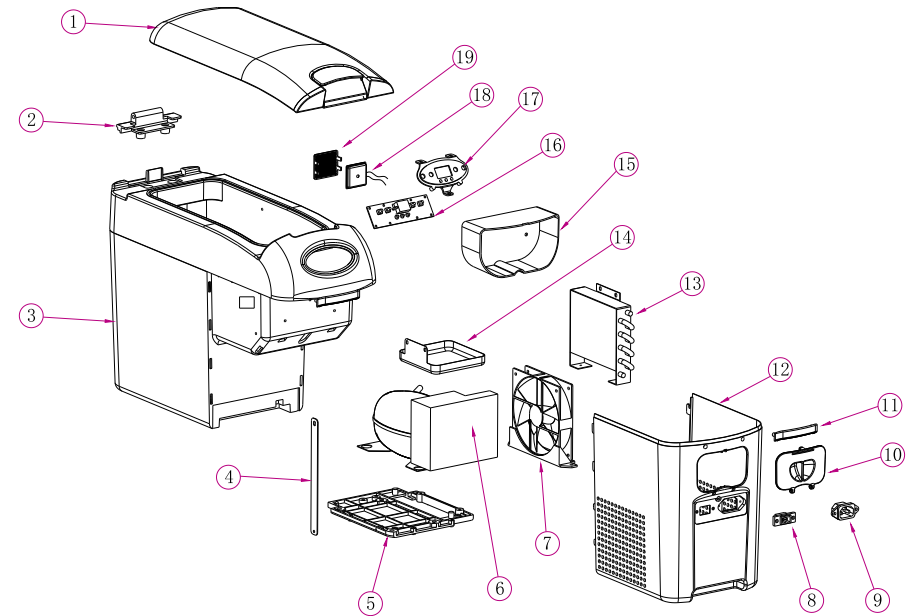


Never use solvents or agents with sand or acid for cleaning the cooling tank.
Never use brushes, graters or hard and sharp tools

Specification

Model No.	BD/C-9	BD/C-11
Capacity	9L	11L
Temperature range	20°C to -19°C	20°C to -19°C
Input voltage	DC 12V/24V, AC 220V~240V	DC 12V/24V, AC 220V~240V
Average running current	3Amps on DC 12V	4Amps on DC 12V
Power consumption	36W	48W
Compressor specification	DC 12V/24V	DC 12V/24V
Cut-out voltage	10.5V	10.5V
Net weight	6.5KG	7KG
Item dimension	505*185*367mm	505*185*410mm

Structure Table



- 1.Lid
- 2.Lid Hinge
- 3.Cabinet
- 4.Support Bracket
- 5.Base
- 6.Compressor
- 7.Fan
- 8.DC Socket
- 9.AC Socket(Optional)

- 10.Storage Cover
- 11.Compressor Cover
12. Condensor
- 13.Water Tray
- 14.Storage Bin
- 15.PCB Control Panel
- 16.PCB Bracket
- 17.Interior Light
- 18.Light Cover

Instructions

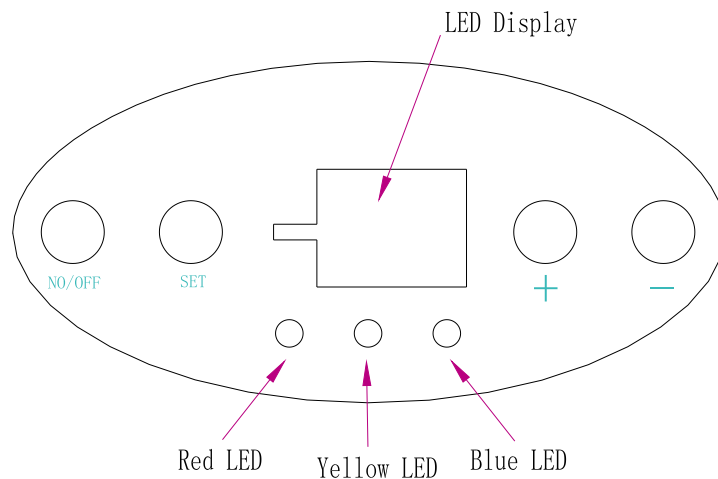
- 1.Do not use unit more than 45 degree.
- 2.Keep all vents well venterlated.
- 3.Temperture range 20°C to -19°C.
- 4.Unit may be repaired by authorised agent only.
- 5.Failure to do so will render warrenty invalid.

Installation

1. Baldric installation



2. Temperature Settings



a. Press ON/OFF button to start unit.

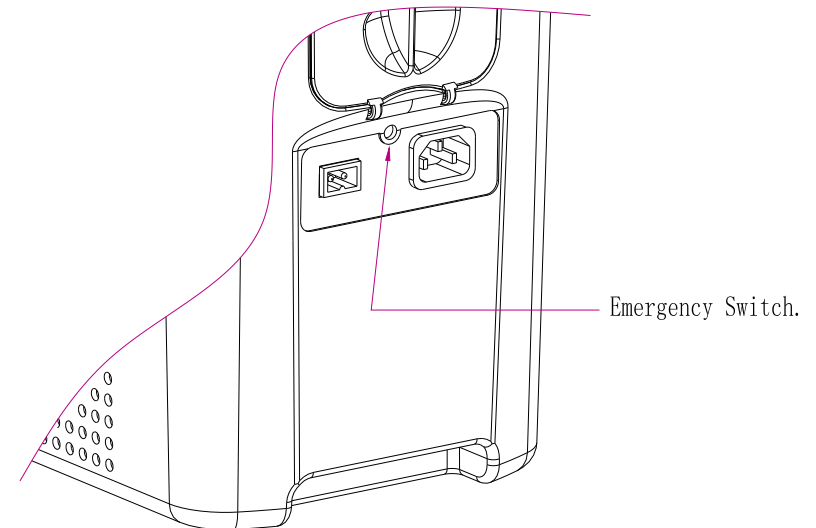
b. SET temperature, press "SET" button first, then by pressing the "+" and "-" button to adjust the unit. Adjustable temperature from 20°C to -19°C .

c. Checking voltage press "+" and "-" together. Hold down for 5 sec. The indicator will show voltage input. The blue LED will flash, this means 1, so if the indicator shows 2.5, the input voltage is 12.5V.

Set voltage protection: press "SET" and "-" button together to adjust the voltage cut out required. Press "set" button again to save setting. Lowest voltage cut out 10.5V

d. LED indication : Red led / Switch on. Yellow led indicates Hi/Low voltage. Led will light up if voltage is above 15V. If unit is running on 24V. Led light will light up when voltage is above 30V. Green LED/ Compressor running.

3. Emergency Switch.



If unit is not cooling or control panel not displaying you can override the controller by pressing the override switch. The override switch is placed between the ac/dc socket on the unit. Use a thin screwdriver or pen to override the control panel by inserting the pen into the hole between the sockets. The unit will run continuously. To switch the unit off press the override button again.